



October 2016, Kottlingbrunn/Austria

PRESS RELEASE

WITTMANN BATTENFELD at the K 2016

WITTMANN BATTENFELD with new UNILOG B8 control system at the K 2016

Under the motto “be smart”, WITTMANN BATTENFELD is presenting its new UNILOG B8 machine control system at the K 2016 in Düsseldorf from 19 to 26 October in hall 16, booth D22. Without exception, the new UNILOG B8 will be installed on all machines.

Both innovation and continuity are characteristic features of UNILOG B8, the new generation of control systems. Innovation in the area of visualization technology and software integration of all modules within a production cell, to be fit for the world of Industrie 4.0. Continuity in terms of symbols, logical processes and physical operation, to continue to grant users direct access to familiar functions in operating the machines. Based on the operating logic of the previous UNILOG B6 control system, WITTMANN BATTENFELD has created the new UNILOG B8, a control system which offers operators even more functions and convenience, while maintaining the ease of operation unchanged.

As with the predecessor version, the new UNILOG B8 also runs under the Windows® operating system, now on Windows® 10 IoT. This enables easy integration of standard applications as well as Internet-based service support. Windows® 10 IoT offers extensive capacities for process control and data communication and thus supports latest, Industrie 4.0-compatible software. With the new generation of control systems, connection via OPC UA to higher-level systems such as MES systems has also become possible.

With the new UNILOG B8, the operation of complex processes has been significantly simplified. To this end, the machine has been equipped with an intuitive multi touch screen operating panel enlarged to 21.5”. Next to the pivotable monitor unit, a user-friendly manual operating panel has been installed in the central console of the machine.



The new UNILOG B8 features an operating logic with a high degree of self-explanation, modeled on modern communication appliances. The process functions can be retrieved by gesture control (wiping/zooming) on the brightly lit, 21.5" full-HD touch screen display, which can be accessed via RFID, key card or key ring. The operating functions of the machine can be controlled by haptic buttons.

The principle of direct access to the numerous functions has been retained by using app icons in fixed positions. Most function pages can be retrieved by one-touch movements.

The status of the machine and/or the integrated robots and peripherals is displayed via a colored status bar and pop-up menus as well as a set of "color traffic lights". Integrated assistance systems support the operator in machine setting and troubleshooting.

The *QuickSetup* program enables fast initial machine setting with a new mold. On the basis of access to the material data sets recorded in B8 and entry of a few data concerning the molded part and the machine, the control system calculates the initial process parameter data set for fast parameter setting. A comprehensive help library is also integrated in the control system.

The smart screen display, which can be partitioned, enables simultaneous display and operation of two different functions. This is a special advantage, since thanks to WITTMANN 4.0 technology, machines and peripherals can be visualized and operated at the same time via a single monitor screen.

With the new UNILOG B8, WITTMANN BATTENFELD is bringing a control system to market which offers extremely high standards of convenience and user-friendliness combined with an attractive modern design.



Fig. 1: The new UNILOG B8 control system – from the K 2016 onwards available for all *PowerSeries* machines

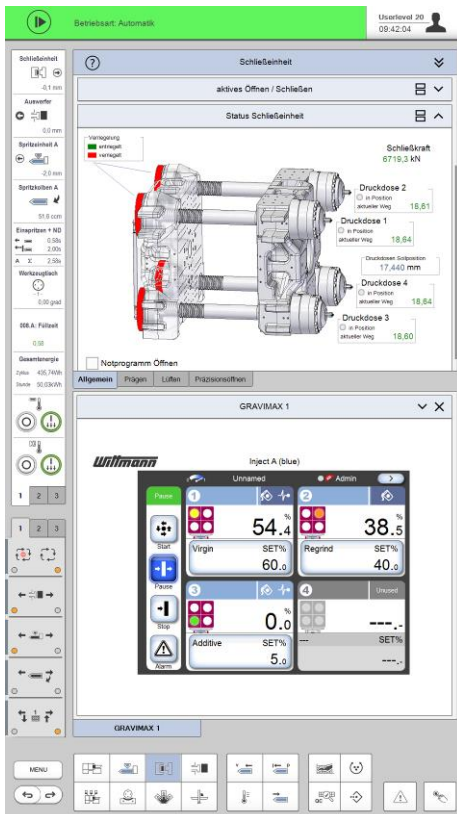


Fig. 2: The partitionable smart screen enables two separate views simultaneously

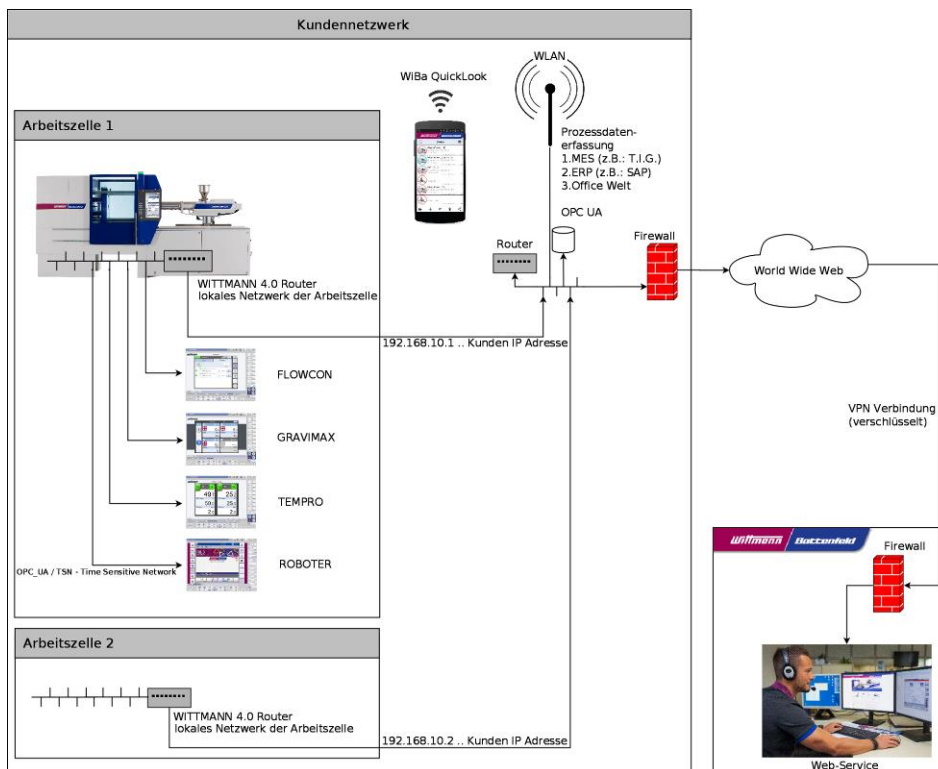


Fig. 3: Integration of robots and peripherals into the machine's UNILOG B8 control system via WITTMANN 4.0 and single-point entry to the network environment

The WITTMANN Group

The WITTMANN Group is a worldwide leader in the manufacturing of injection molding machines, robots and peripheral equipment for the plastics industry. Headquartered in Vienna/Austria, the WITTMANN Group consists of two main divisions, WITTMANN BATTENFELD and WITTMANN, which operate 9 production facilities in 6 countries, including 32 direct subsidiary offices located in all major plastics markets around the world.

WITTMANN BATTENFELD focuses on independent market growth in the manufacturing of state-of-the-art injection molding machines and process technology, providing a modern and comprehensive range of machinery in a modular design that meets the actual and future requirements of the plastic injection molding market.



Wittmann

Battenfeld

WITTMANN's product range includes robots and automation systems, material handling systems, dryers, gravimetric and volumetric blenders, granulators, mold temperature controllers and chillers. With this comprehensive range of peripheral equipment, WITTMANN can provide plastics processors with solutions that cover all production requirements, ranging from autonomous work cells to integrated plant-wide systems.

The syndication of the WITTMANN Group has led to connectivity between all product lines, providing the advantage plastics processors have been looking for in terms of a seamless integration of injection molding machines, automation and auxiliary equipment – all occurring at a progressive rate.

Contact:

WITTMANN BATTENFELD GmbH & Co.KG

Werner-Battenfeld-Strasse 1

D-58540 Meinerzhagen

Tel.: +49 2354 72-0

Fax: +49 2354 72-485

info@wittmann-group.com

www.wittmann-group.com

WITTMANN BATTENFELD GmbH

Wiener Neustädter Strasse 81

A-2542 Kottlingbrunn

Tel.: +43 2252 404-1400

Fax: +43 2252 404-991400

gabriele.hopf@wittmann-group.com